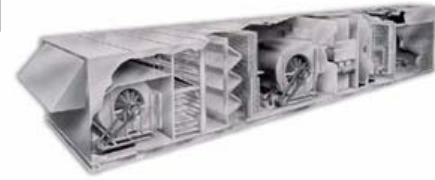


Now In Production

MAY 30th 2005



Century Plaza, located in Southfield, MI

Two roof top single zone steel mounted replacements for Governair.

Representative : Thermal-Netics, INC. 3500 W Eleven Mile Road Berkley, MI

Rick Sutkiewicz, Bob Scheff and Tim Winn ; P 248-336-2199 ; F 248-336-2192

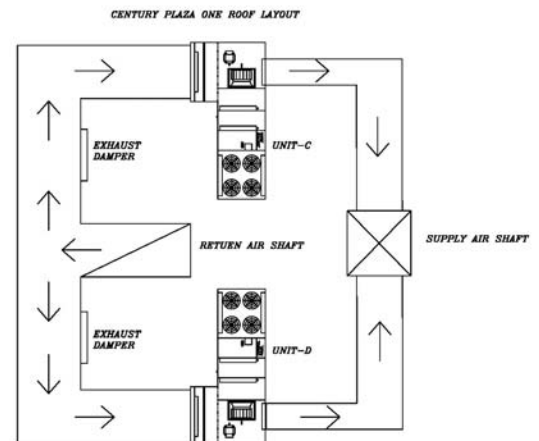
Two office buildings adjacent and mirror images of each other, each building has two 70 ton cooling, no heat, single zone units; units are L shape, steel mounted with side return and side supply.

A single return air shaft on the roof is ducted to both unit's return air openings and a single supply air shaft, which is ducted to both supply air ducts.

The units must be manufactured in two sections and put together at the job site by the installing contractor.

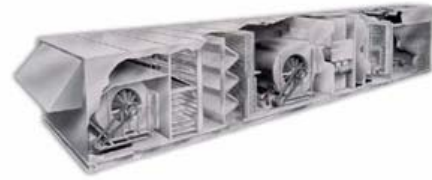
Because the return air ducts and supply air ducts are located on opposite sides across the width of the unit, return and outside air flows through the upper level of the unit then travels to the lower sections of the unit (filter section, DX coil section and blower section) conditioned and discharged thru the side of the unit.

The units are double wall construction with variable frequency drive, plenum supply air fan and has DDC controls.



Now In Production

MAY 30th 2005



Century Plaza, located in Southfield, MI

Two roof top single zone steel mounted replacements for Govrenair.

Representative : Thermal-Netics, INC. 3500 W Eleven Mile Road Berkley, MI

Rick Sutkiewicz, Bob Scheff and Tim WINN ; P 248-336-2199 ; F 248-336-2192

Cooling capacity 840,432 BTUH, Sensible cooing 581,311 BTUH, Airflow 20,000 CFM
 4 Scroll compressors, 4/1.5 HP condenser fans, 6 row condenser coils and 10 row evaporator coils.

