

Now In Production

January 16th, 2005



Christ Prince of Peace, New Middle School – Office Addition, Manchester, MO

One custom new, 47 ton, Multi-zone Triple Deck system with DX cooling and Recovery Wheel
Representative : Thermal Mechanics, INC., 719 Goddard AVE, Chesterfield, MO 63005
 Wayne Nenninger, Dave Rich, Mark Obergfell Phone: 636-532-1110

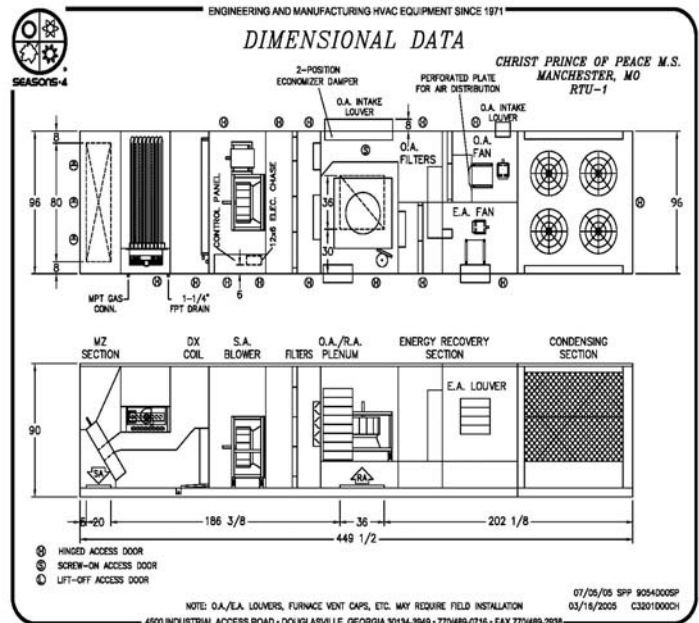
Mr. Wayne Nenninger Seasons-4's representative and Mr. Thomas Berkeley of Thomas Berkeley Consulting Engineer worked together to solve a particular application for Christ Prince of Peace Middle School.

This project was too small for a central system with chillers and boilers but too big for off the shelf type multiple single-zone units.

Mr. Berkeley was looking for the most efficient and compact system that the technology can offer. They combined forces with Seasons-4 and the result was a Packaged Triple Deck Multi-zone system to provide cooling and heating for 9 zones. It includes DX cooling, gas heat, dedicated outside air Energy Recovery Wheel, outside air fan, exhaust air fan and return air fan with total unit EER of 11.8!

Triple Deck Multi-zone units meet the ASHRAE Standard 90.1 Energy Code and Standard 62.1 ventilation requirements.

All the heating and cooling components are on the roof in one package. This eliminates the need for terminal units or other equipment above the ceiling which may require piping or significant power wiring. Hydronic system leaks can be avoided, and pumps and other maintenance items can be eliminated.



Now In Production

January 16th, 2005



Christ Prince of Peace, New Middle School – Office Addition, Manchester, MO

One custom new, 47 ton, Multi-zone Triple Deck system with DX cooling and gas heat section

Representative : Thermal Mechanics, INC., 719 Goddard AVE, Chesterfield, MO 63005

Wayne Nenninger, Dave Rich, Mark Obergfell Phone: 636-532-1110

A dedicated outside/exhaust air energy recovery wheel recovers the energy from the exhaust air to pre-cool the outside air in summer and pre-heat the outside air in winter.

The dedicated outside air fan maintains the minimum ventilation requirements at all times.

Some of the other options included with the unit:

567,526 BTUH DX cooling, 320,000 BTUH output gas heating, 10,000 total CFM, 2442 outside air and exhaust air CFM.

Two hermetic Discus compressors

Aluminum exterior panels, 2" double wall insulation, 4" 30% efficient filters.

Airfoil SWSI Plenum supply and return air blowers.

Economizer section.

DDC temperature control system.

Custom built roof curb.

