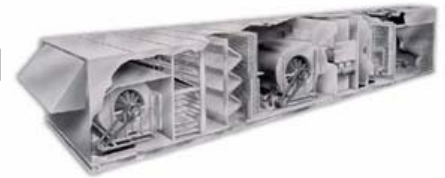


Now In Production

DECEMBER 2008



NEW SOUTH RICHMOND COUNTY MIDDLE SCHOOL, AUGUSTA, GA

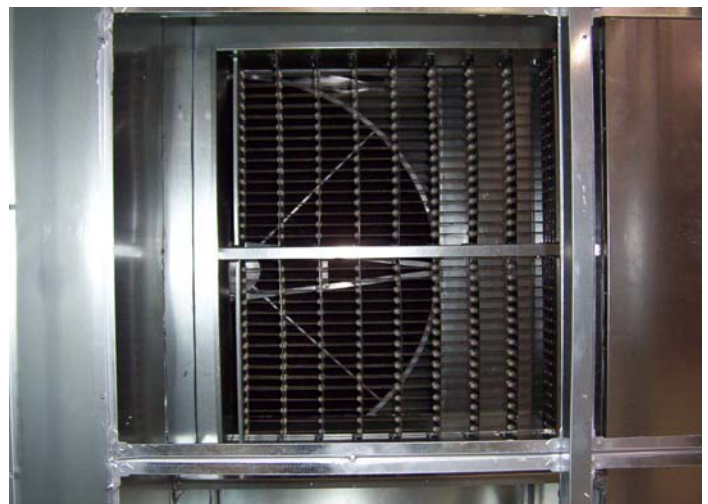
Three (3) 42-tons Custom New Energy Recovery Units (ERU), each with Enthalpy and Sensible Recovery Wheels, plenum airfoil SWSI supply and exhaust blowers. Unit EER 16.5

Representative : Thermal Recovery Systems, Inc., 4942 Hammermill Road, Tucker, GA 30084

Craig White ; P 404-915-1211 ; F 803-593-7757 ; www.thermalrecovery.com



11,000 cfm of outside air at 95/77.7 deg F is conditioned thru an enthalpy wheel, dehumidified with DX coils and reheated with a sensible heat wheel to 72.3/65.3 deg F.



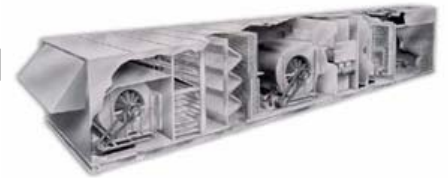
The units include Loren Cook plenum airfoil supply and exhaust air blowers, TEFC premium efficiency motors and perforated liners for sound attenuation. 70 to 85 KW auxiliary electric heat, lights in all accessible sections, 2" pleated and 12" cartridge final filters are some of the features provided with the units.



4500 Industrial Access Road Douglasville, GA 770-489-0716 P ; 770-489-2938 F ; www.seasons4.net

Now In Production

DECEMBER 2008



NEW SOUTH RICHMOND COUNTY MIDDLE SCHOOL, AUGUSTA, GA

Three (3) 42-tons Custom New Energy Recovery Units (ERU), each with Enthalpy and Sensible Recovery Wheels, plenum airfoil SWSI supply and exhaust blowers. Unit EER 16.5

Representative : Thermal Recovery Systems, Inc., 4942 Hammermill Road, Tucker, GA 30084

Craig White ; P 404-915-1211 ; F 803-593-7757 ; www.thermalrecovery.com



Air cooled condensing sections with 4 independently-piped scroll compressors, condenser coil guards, and 2" double wall kynar painted aluminum exterior panels are additional features.



Every door is provided with a single door handle with multiple latches and aluminum hinges. The state of the art control panel is every service technician's fantasy. The units are completely tested and shipped to the jobsite for rigging.



ENGINEERING SPECIFICATIONS

JOB NAME NEW SOUTH RICHMOND COUNTY MS
LOCATION AUGUSTA, GA
DATE PREPARED Revised: 04/21/08
SEASONS-4 REFERENCE # A094-01
UNIT MODEL # 3EPK38-0424-ER070-11ER
UNIT DESIGNATION ERU-1,2
SYSTEM VOLTAGE 460/3/60

DESIGN DATA

TOTAL COOLING CAPACITY (BTUH):	509,791
OUTDOOR AIR (CFM)	12,395
SUPPLY AIRFLOW (CFM)	11,000
ESTIMATED REFRIGERANT CHARGE (LBS. R22)	110

COMPRESSOR SECTION

COMPRESSOR:

TYPE	COPELAND SCROLL
NUMBER	4
STAGES OF CAPACITY	4

AIR COOLED CONDENSER SECTION

CONDENSER COIL:

COIL FACE AREA/ROWS/FPI	60.3/4/10
DESIGN AMBIENT TEMPERATURE (FDB):	95.0

CONDENSER FANS:

TYPE	PROPELLER
DIA/RPM	30/1,140
QTY/HP	4/1.0

COOLING SYSTEM 1

FACE AREA (SQ-FT)	25.0
ROWS/FPI	6/12
COIL CIRCUITS (NUMBER)	4
TOTAL CAPACITY (BTUH)	509,791
SENSIBLE CAPACITY (BTUH)	275,691
ENTERING AIR TEMP (FDB/FWB)	72.3/65.3
COIL LEAVING AIR TEMP (FDB/FWB)	50.6/50.1
CONDITIONED AIR (CFM)	11,534

SUPPLY AIR BLOWER SECTION

TYPE	AF SWSI PLENUM
NUMBER/SIZE	1/27"
AIRFLOW (CFM)	11,000
TOTAL STATIC PRESSURE (TSP) IN WC	5.67
EXTERNAL STATIC (ESP) IN WC	1.50
DESIGN FAN SPEED (RPM)	1,590
FAN BHP (INCLUDING DRIVE LOSSES)	13.6
MOTOR HP	15.0
MOTOR DRIVE	ADJUSTABLE SHEAVE

ENGINEERING SPECIFICATIONS

FINAL FILTER SECTION

TYPE	12" CARTRIDGE 85%
NUMBER/SIZE	6/24x24
TOTAL FACE AREA (SQ-FT)	24.0
FACE VELOCITY (FPM)	458

ELECTRIC HEAT SECTION

TYPE	OPEN WIRE
INPUT CAPACITY (KW)	70
CONDITIONED AIR (CFM)	11,000
CONDITIONED AIR TR (F)	20.1
STAGING	5

ENERGY RECOVERY WHEEL #1 (Total Wheel)

SIZE	72.5 IN DIA / 8 IN DEEP
SUPPLY AIRFLOW (SCFM)	12,395
SUMMER ENTERING AIR TEMP (FDB/FWB)	98.0/77.7
SUMMER LEAVING AIR TEMP (FDB/FWB)	72.3/65.3
PRESSURE DROP (IN-WC)	0.64

ERS OUTSIDE AIR FILTER SECTION

TYPE	2" PLEATED 30%
NUMBER/SIZE	6/24x24
TOTAL FACE AREA (SQ-FT)	24.0
FACE VELOCITY (FPM)	516

ERS RETURN AIR FILTER SECTION

TYPE	2" PLEATED 30%
NUMBER/SIZE	6/24x24
TOTAL FACE AREA (SQ-FT)	24.0
FACE VELOCITY (FPM)	354

ERS EXHAUST AIR BLOWER

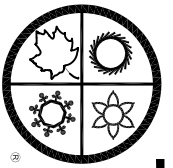
TYPE	AF SWSI PLENUM
NUMBER/SIZE	1/27"
AIRFLOW (CFM) (INCLUDING O.A. PURGE)	9,895
TOTAL STATIC PRESSURE (IN-WC)	3.58
EXTERNAL STATIC (ESP) IN WC	1.50
DESIGN FAN SPEED (RPM)	1,314
FAN BHP (INCLUDING DRIVE LOSSES)	7.8
MOTOR HP	10.0
MOTOR DRIVE	ADJUSTABLE SHEAVE

ENERGY RECOVERY WHEEL #2 (Sensible Wheel)

SIZE	72.5 IN DIA / 8 IN DEEP
SUPPLY AIRFLOW (SCFM)	12,395
SUMMER ENTERING AIR TEMP (FDB/FWB)	50.6/49.6
SUMMER LEAVING AIR TEMP (FDB/FWB)	66.2/56.4
PRESSURE DROP (IN-WC)	0.80

UNIT WEIGHT (LBS)

15,000

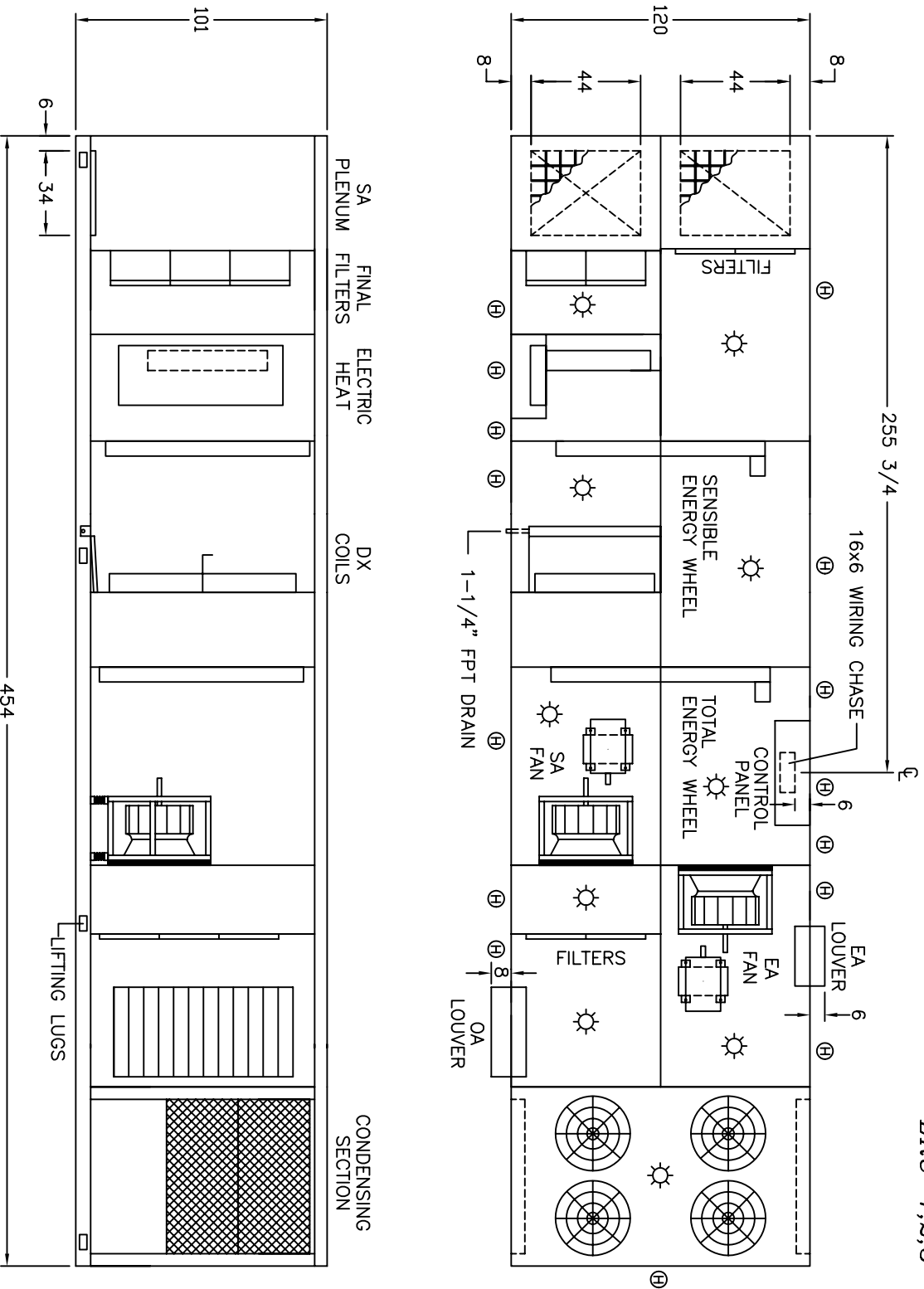


SEASONS 4

ENGINEERING AND MANUFACTURING HVAC EQUIPMENT SINCE 1971

DIMENSIONAL DATA

NEW SOUTH RICHMOND COUNTY MS
AUGUSTA, GA
ERU-1,2,3



- Ⓜ HINGED ACCESS DOOR
- Ⓢ SCREW-ON ACCESS DOOR
- Ⓛ LIFT-OFF ACCESS DOOR

NOTE: O.A./E.A. LOUVERS, FURNACE VENT CAPS, ETC. MAY REQUIRE FIELD INSTALLATION

4500 INDUSTRIAL ACCESS ROAD • DOUGLASVILLE, GEORGIA 30134-3949 • 770/489-0716 • FAX 770/489-2938

REVISION	DATE	BY
3	12/3/08	JHH
2	11/7/08	JHH
1	4/21/08	JHH
	3/28/08	A094D00HH