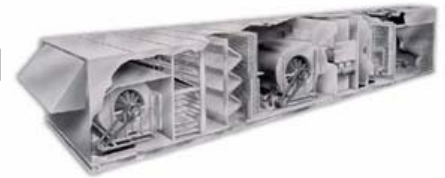


Now In Production

JANUARY 2009



SOLANO COUNTY PUBLIC HEALTH CLINIC, FAIRFIELD, CA

One (1) 210-tons Custom New roof top package unit with DX cooling, hot water heating coil and air-cooled condensing section, 55,000 CFM airflow and **R-134A** refrigerant, **208/3/60 Volt**

Representative : Tempco Equipment Company, 555 Twin Dolphin Place suite 620, Redwood City, CA 94065
Phil Chardon ; P 650-596-1700 ; F 650-596-1701 ; www.tempco.net



Three (3) Copeland screw compressors each with independent refrigeration circuits, air cooled condensing section, and **R-134A** refrigerant.



The unit is built in two sections for shipping purposes but it is designed so all refrigeration circuits are intact when the unit is split. The unit has plenum supply and return air blowers with premium efficiency motors and air flow measuring stations.



Now In Production

JANUARY 2009



SOLANO COUNTY PUBLIC HEALTH CLINIC, FAIRFIELD, CA

One (1) 210-tons Custom New roof top package unit with DX cooling, hot water heating coil and air-cooled condensing section, 55,000 CFM airflow and **R-134A** refrigerant, **208/3/60 Volt**

Representative : Tempco Equipment Company, 555 Twin Dolphin Place Suite 620, Redwood City, CA 94065
Phil Chardon ; P 650-596-1700 ; F 650-596-1701 ; www.tempco.net



Variable frequency drives on supply and return air blower motors, MERV 13 filters, mist eliminators, Automated Logic DDC controls with BacNet, LonWorks, ModBus and N2 protocol capabilities are some of the features provided with the unit.



The exterior panels are fabricated from Kynar painted aluminum (never rusts). Marine-type service lights are provided in each accessible section. The unit is completely tested then split in two sections and shipped to the jobsite.



ENGINEERING SPECIFICATIONS

JOB NAME SOLANO CO. HEALTH CLINIC
LOCATION FAIRFIELD, CA
DATE PREPARED Revised: 10/16/08
SEASONS-4 REFERENCE # A175
UNIT MODEL # 3SSR53-2023-HW9.2-55SE
UNIT DESIGNATION AHU-L-1
SYSTEM VOLTAGE 208/3/60

DESIGN DATA

TOTAL COOLING CAPACITY (BTUH):	2,430,666
TOTAL AIRFLOW (CFM)	55,000
OUTDOOR AIR (CFM)	35,400 - 55,000
ESTIMATED REFRIGERANT CHARGE (LBS. R134A)	600
EER	10.0

COMPRESSOR SECTION

COMPRESSOR:

TYPE	COPELAND SCREW
NUMBER	3
STAGES OF CAPACITY	MODULATING

AIR COOLED CONDENSER SECTION

CONDENSER COIL:

COIL FACE AREA/ROWS/FPI	240.0/6/10
DESIGN AMBIENT TEMPERATURE (FDB):	103.0

CONDENSER FANS:

TYPE	PROPELLER
DIA/RPM	30/1,140
QTY/HP	18/1.5

COOLING SYSTEM

FACE AREA (SQ-FT)	110.6
ROWS/FPI	8/10
COIL CIRCUITS (NUMBER)	3
TOTAL CAPACITY (BTUH)	2,430,666
SENSIBLE CAPACITY (BTUH)	2,311,200
ENTERING AIR TEMP (FDB/FWB)	90.0/66.0
COIL LEAVING AIR TEMP (FDB/FWB)	51.6/50.8
CONDITIONED AIR (CFM)	55,000

SUPPLY AIR BLOWER SECTION

TYPE	AF SWSI PLENUM
NUMBER/SIZE	1/54"
AIRFLOW (CFM)	55,000
TOTAL STATIC PRESSURE (TSP) IN WC	5.40
EXTERNAL STATIC (ESP) IN WC	2.00
DESIGN FAN SPEED (RPM)	858
FAN BHP (INCLUDING DRIVE LOSSES)	63.7
MOTOR HP	75.0
MOTOR DRIVE	VARIABLE FREQUENCY DRIVE

ENGINEERING SPECIFICATIONS

RETURN AIR BLOWER SECTION

TYPE	AF SWSI PLENUM
NUMBER/SIZE	1/40.25"
AIRFLOW (CFM)	19,600
TOTAL STATIC PRESSURE (TSP) IN WC	2.00
EXTERNAL STATIC (ESP) IN WC	1.50
DESIGN FAN SPEED (RPM)	717
FAN BHP (INCLUDING DRIVE LOSSES)	8.6
MOTOR HP	10.0
MOTOR DRIVE	VARIABLE FREQUENCY DRIVE

FILTER SECTION

TYPE	2" PLEATED (MERV 8)
NUMBER/SIZE	25/24x24, 5/12x24
TOTAL FACE AREA (SQ-FT)	110.0
FACE VELOCITY (FPM)	500

FILTER SECTION

TYPE	4" PLEATED (MERV 13)
NUMBER/SIZE	25/24x24, 5/12x24
TOTAL FACE AREA (SQ-FT)	110.0
FACE VELOCITY (FPM)	500

OA FILTER SECTION

TYPE	MIST ELIMINATOR
NUMBER/SIZE	40/20x20
TOTAL FACE AREA (SQ-FT)	111.1
FACE VELOCITY (FPM)	495

HOT WATER COIL SECTION

FACE AREA (SQ-FT)	60.0
ROWS/FPI	2/6
CAPACITY (BTUH)	1,845,036
ENTERING AIR TEMP (DEG F)	45.0
LEAVING AIR TEMP (DEG F)	75.8
CONDITIONED AIR (ACFM)	55,000
ENTERING WATER TEMP (DEG F)	180.0
LEAVING WATER TEMP (DEG F)	139.0
FLOWRATE (GPM each Coil)	45.0
TYPE FLUID	WATER
FLUID PRESSURE DROP (FT WATER each Coil)	1.32
SUPPLY/RETURN CONNECTION SIZE (each Coil)	2 1/8, 2 1/8

UNIT WEIGHT (LBS)

37,500

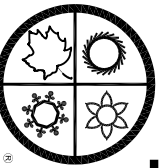
ENGINEERING SPECIFICATIONS

ELECTRICAL DATA

JOB NAME SOLANO CO. HEALTH CLINIC
LOCATION FAIRFIELD, CA
DATE PREPARED Revised: 10/16/08
SEASONS-4 REF NUMBER A175 **UNIT MODEL** 3SSR53-2023-HW9.2-55SE
UNIT DESIGNATION AHU-L-1

SYSTEM VOLTAGE	208	CONTROL VOLTAGE	120	EXT. VOLTAGE	24	
<u>ITEM</u>	<u>QTY</u>	<u>HP</u>	<u>FLA</u>	<u>LRA</u>	<u>KW</u>	<u>TYPE</u>
COMPRESSOR 1	2	***	274.0	1416.0	69.3	SCA2-800E
COMPRESSOR 2	1	***	240.0	1021.0	55.6	SCA2-700E
COND FAN(1)	18	1.5	5.7	34.2	1.4	
SA FAN	1	75.0	206.0	1150.0	50.3	Bald
RA FAN	1	10.0	29.2	206.0	7.0	Bald
CONTROL CKT			3.6			
TOTALS (COOL)	23	***	1129.4		277.0	
TOTALS (HEAT)	2	85.0	238.8		57.3	

M.C.A. (MINIMUM CIRCUIT AMPACITY)
M.O.P. (MAXIMUM OVERLOAD PROTECTION)
S.C.C.R. (SHORT CIRCUIT CURRENT RATING)

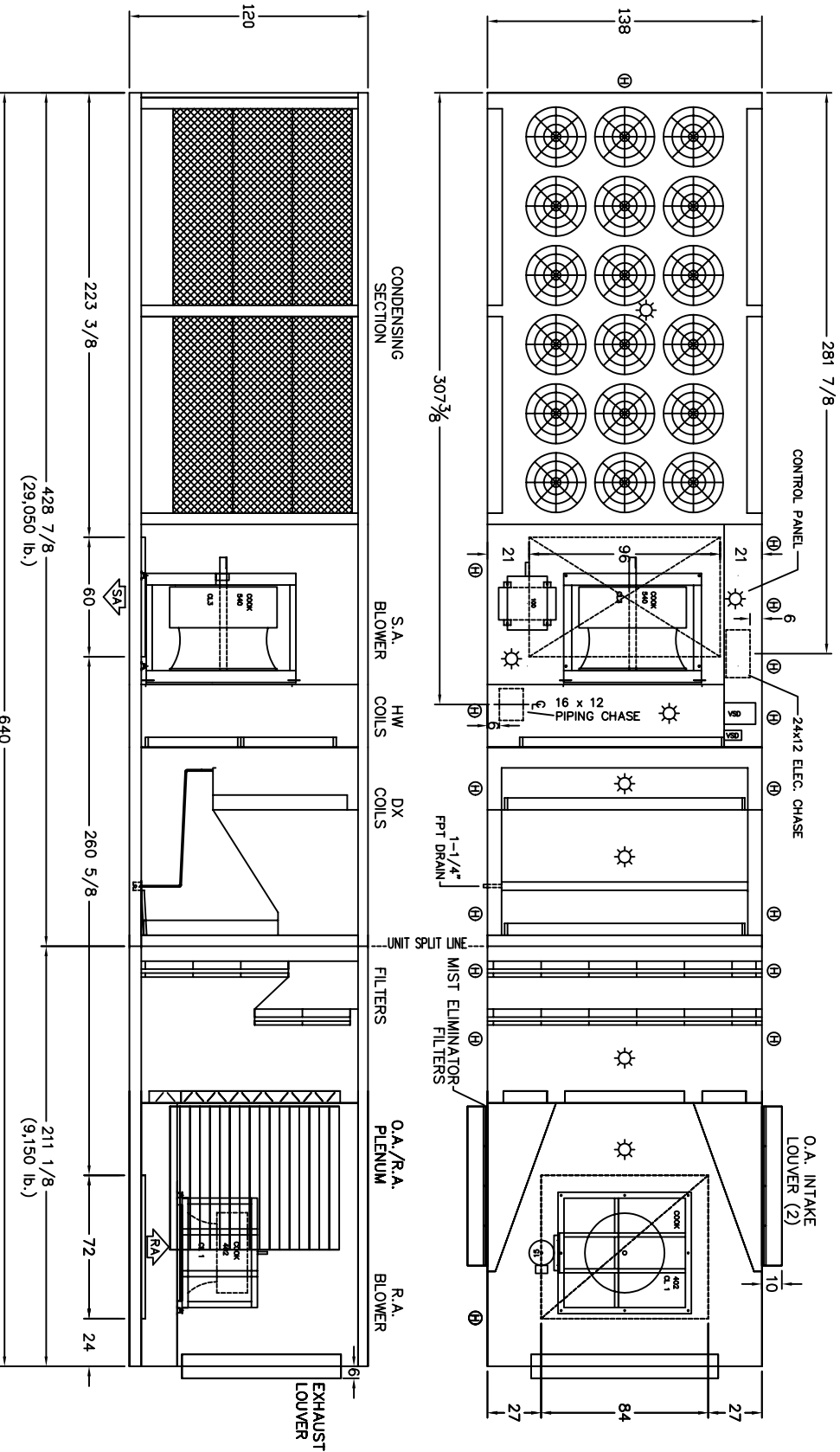


SEASONS 4

ENGINEERING AND MANUFACTURING HVAC EQUIPMENT SINCE 1971

DIMENSIONAL DATA

SOLANO CO. HEALTH CLINIC
FAIRFIELD, CA
AHU-L-1



- ☼ LIGHT
- ⊕ HINGED ACCESS DOOR
- Ⓢ SCREW-ON ACCESS DOOR
- Ⓛ LIFT-OFF ACCESS DOOR

NOTE: O.A./E.A. LOUVERS, FURNACE VENT CAPS, ETC. MAY REQUIRE FIELD INSTALLATION

4500 INDUSTRIAL ACCESS ROAD • DOUGLASVILLE, GEORGIA 30134-3949 • 770/489-0716 • FAX 770/489-2938

- REV. 4: 11/25/2008 JDP
- REV. 3: 07/23/2008 JDP
- REV. 2: 06/17/2008 JDP
- REV. 1: 06/16/2008 JDP
- 06/05/2008 JDP A175D000JP