

# *Now In Production*

*OCTOBER 2008*



## **STATION SQUARE, PHILADELPHIA, PA**

One (1) 64-ton direct replacement multi-zone triple deck VAV unit with **R-410a refrigerant**.  
24,000 cfm and 1,200 mbh input high turn down natural gas burner.

**Representative** : Energy Transfer Solutions, Inc. 425 McFarlan Rd., suit 209, Kennett Square, PA 19348  
**Pete Wolf** ; P 610-444-0333 ; F 610-444-0332 ; [www.etsi-online.com](http://www.etsi-online.com)



Existing Governair unit



Seasons-4 Direct Replacement Unit

The Triple deck multi-zone unit is shaped like the letter **L**.  
For shipping reasons, unit had to be built in two sections.



Return air and Supply air blower sections



Condensing and discharge air sections

The air moving section of the unit consists of twin airfoil plenum SWSI blowers with two premium efficiency motors with variable frequency drives. The condensing section includes four (4) scroll compressors with independent **R410A refrigerant** circuits, DX coils, high turn down power burner and multi-zone damper sections.



# *Now In Production*

*OCTOBER 2008*



## **STATION SQUARE, PHILADELPHIA, PA**

One (1) 64-ton direct replacement multi-zone triple deck VAV unit with **R-410a refrigerant**.  
24,000 cfm and 1,200 mbh input high turn down natural gas burner.

**Representative : Energy Transfer Solutions, Inc. 425 McFarlan Rd., suit 209, Kennett Square, PA 19348**  
**Pete Wolf ; P 610-444-0333 ; F 610-444-0332 ; [www.etsi-online.com](http://www.etsi-online.com)**



End discharge configuration, a triple deck multi-zone damper, aluminum hinged access doors for the zone actuators and 4" 85% efficient filters are some of the features provided with the unit.



Some additional features are state-of-the-art control panel with stand alone DDC system, Kynar painted aluminum panels, and access doors with single door handle and multiple latches. The unit is completely tested then split in two sections and shipped to the jobsite for rigging.



4500 Industrial Access Road Douglasville, GA 770-489-0716 P ; 770-489-2938 F ; [www.seasons4.net](http://www.seasons4.net)

**ENGINEERING SPECIFICATIONS**

<b>JOB NAME</b>	STATION SQUARE
<b>LOCATION</b>	PAOLI, PA
<b>DATE PREPARED</b>	Revised: 10/15/08
<b>SEASONS-4 REFERENCE #</b>	A242
<b>UNIT MODEL #</b>	6MUR19-0644-MN12.-24SE
<b>UNIT DESIGNATION</b>	AHU-2-1
<b>SYSTEM VOLTAGE</b>	208/3/60

**DESIGN DATA**

TOTAL COOLING CAPACITY (BTUH)	778,051
TOTAL AIRFLOW (CFM)	24,000
OUTDOOR AIR (CFM)	3,500 - 24,000
ESTIMATED REFRIGERANT CHARGE (LBS. R410A)	170

**COMPRESSOR SECTION**

COMPRESSOR:	
TYPE	COPELAND SCROLL
NUMBER	4
STAGES OF CAPACITY	4

**AIR COOLED CONDENSER SECTION**

CONDENSER COIL:	
COIL FACE AREA/ROWS/FPI	125.0/4/10
DESIGN AMBIENT TEMPERATURE (FDB):	100.0
CONDENSER FANS:	
TYPE	PROPELLER
DIA/RPM	30/1,140
QTY/HP	6/1.0

**COOLING COIL SECTION 1**

FACE AREA (SQ-FT)	48.6
ROWS/FPI	4/10
COIL CIRCUITS (NUMBER)	4
TOTAL CAPACITY (BTUH)	778,051
SENSIBLE CAPACITY (BTUH)	562,627
ENTERING AIR TEMP (FDB/FWB)	80.0/66.0
COIL LEAVING AIR TEMP (FDB/FWB)	58.7/55.4
CONDITIONED AIR (CFM)	24,000

**SUPPLY AIR BLOWER SECTION**

TYPE	AF SWSI PLENUM
NUMBER/SIZE	2/27"
AIRFLOW (CFM)	24,000
TOTAL STATIC PRESSURE (TSP) IN WC	4.13
EXTERNAL STATIC (ESP) IN WC	1.20
DESIGN FAN SPEED (RPM)	1,479
FAN BHP (INCLUDING DRIVE LOSSES)	2 @ 10.9
MOTOR HP	2 @ 15
MOTOR DRIVE	VARIABLE FREQUENCY DRIVE

## ENGINEERING SPECIFICATIONS

### RETURN AIR BLOWER SECTION

TYPE	FC DWDI
NUMBER/SIZE	2/20-18"
AIRFLOW (CFM)	20,500
TOTAL STATIC PRESSURE (TSP) IN WC	1.10
EXTERNAL STATIC (ESP) IN WC	0.50
DESIGN FAN SPEED (RPM)	581
FAN BHP (INCLUDING DRIVE LOSSES)	9.0
MOTOR HP	10.0
MOTOR DRIVE	VARIABLE FREQUENCY DRIVE

### PRE-FILTER SECTION

TYPE	2" PLEATED 30% EFFICIENCY
NUMBER/SIZE	30/16x25
TOTAL FACE AREA (SQ-FT)	83.3
FACE VELOCITY (FPM)	288

### FILTER SECTION

TYPE	4" PLEATED 85% EFFICIENCY
NUMBER/SIZE	30/16x25
TOTAL FACE AREA (SQ-FT)	83.3
FACE VELOCITY (FPM)	288

### AUXILIARY GAS HEAT SECTION

TYPE	NATURAL GAS; POWER BURNER
INPUT CAPACITY (BTUH)	1,200,000
OUTPUT CAPACITY (BTUH)	960,000
CONDITIONED AIR (CFM)	24,000
CONDITIONED AIR TR (F)	37
STAGING	MODULATING
GAS CONNECTION SIZE (MPT)	1-1/4"
MIN GAS PRESSURE (IN-WC)	7"
MAX GAS PRESSURE (IN-WC)	14"

UNIT WEIGHT (LBS)	20,700
CURB WEIGHT (LBS)	650

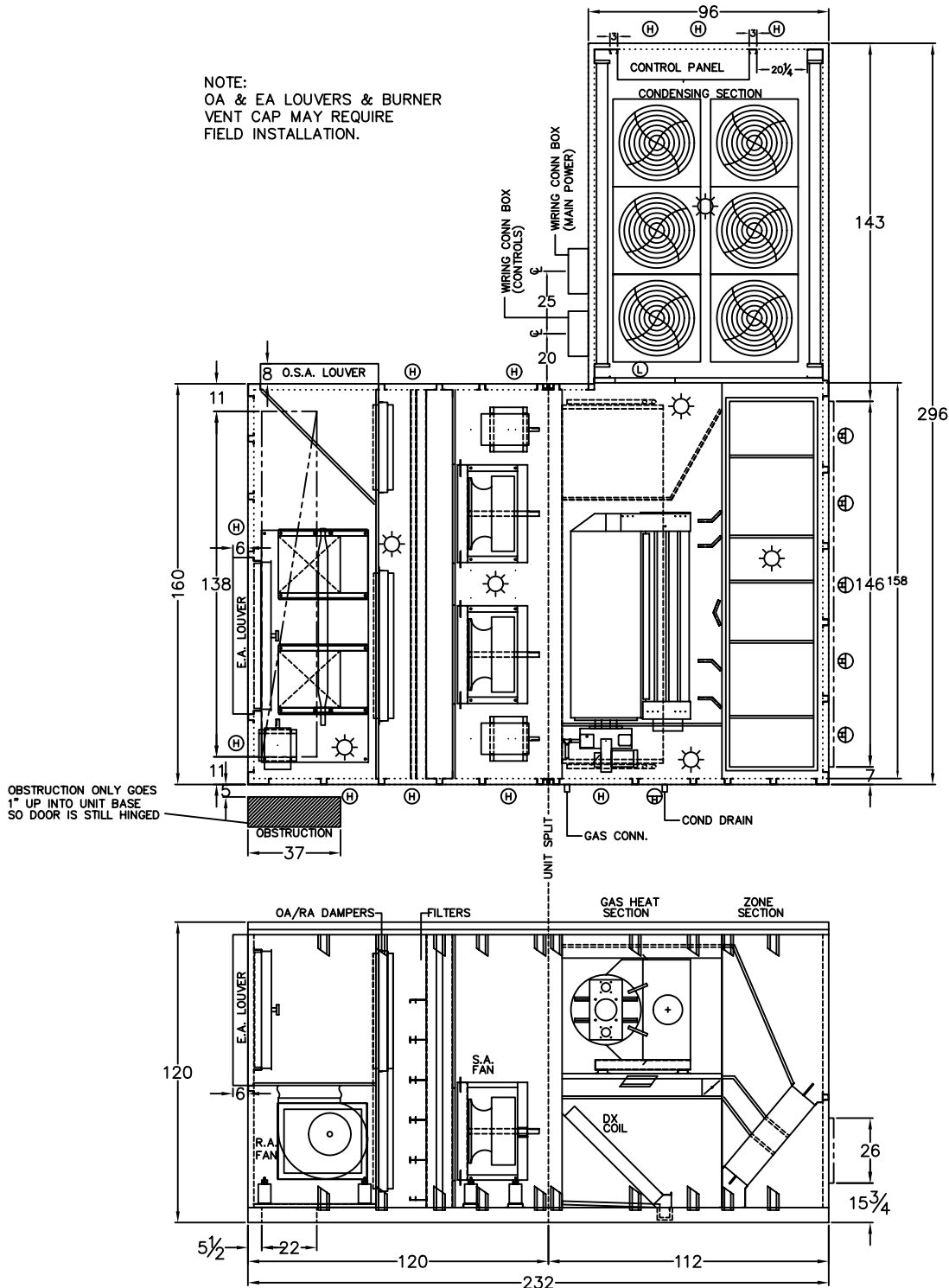


SEASONS-4

# DIMENSIONAL DATA

STATION SQUARE  
PAOLI, PA  
AHU-2-1

NOTE:  
OA & EA LOUVERS & BURNER  
VENT CAP MAY REQUIRE  
FIELD INSTALLATION.



- ☼ SERVICE LIGHT
- Ⓜ HINGED ACCESS DOOR
- Ⓛ LIFT-OFF ACCESS PANEL

REVISION 2 10/8/08 JHH  
 REVISION 1 9/8/08 JHH  
 8/13/08 HH/BWS A242DO0HH