

Now In Production

October 10th 2005



Wachovia Bank, Easton, PA

One custom new, 80 ton, Dual Duct system with DX cooling and hot water coil heat section.

Representative : Metz Company, 2211 Lehigh Street, Easton, PA

Sam Gelfo, Jon Flem, Phone: 610-253-9677

ASHRAE handbook, HVAC Applications 2003, describes **Dual –duct Systems as**:

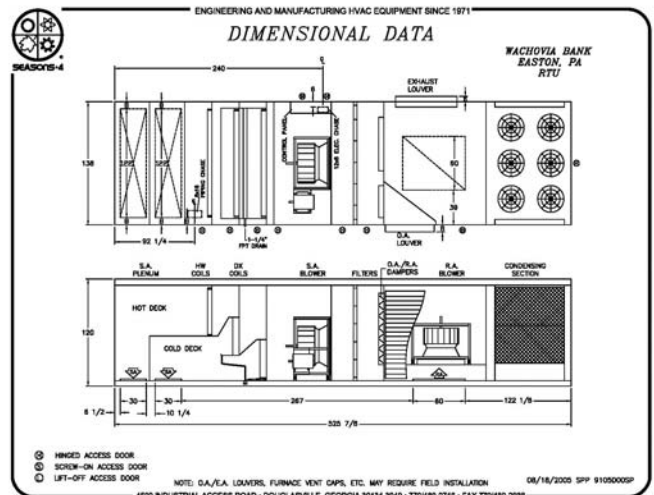
“A **single supply fan system** uses a single fan to supply air to separate heating and cooling ducts. Terminal mixing boxes are used to control the zone temperature.”

Wachovia Bank building is an existing multi story building with two indoor dual-duct units. The units are old and ready for replacement.

Mr. Sam Gelfo of Metz Company, Seasons-4's Eastern Pennsylvania representative, worked with the consulting engineer and the contractor, and they came up with a better solution for the replacement of the old indoor units.

They offered a custom new roof top dual-duct unit to replace the two old indoor units, Seasons-4 provided the preliminary design and it was approved by the Wachovia Bank and the rest is history.

Did you know a 37,000 CFM Multizone or Dual-Duct unit cabinet, is the same size as a 74,000 CFM Single zone unit?



4500 Industrial Access Road Douglasville, GA 770-489-0716 P ; 770-489-2938 F ; www.seasons4.net

Now In Production

October 10th 2005



Wachovia Bank, Easton, PA

One custom new, 80 ton, Dual Duct system with DX cooling and hot water coil heat section.

Representative : Metz Company, 2211 Lehigh Street, Easton, PA

Sam Gelfo, Jon Flem, Phone: 610-253-9677

Cooling Capacity 960,261 BTUH.

Heating Capacity (Hot Water Coil) 670,902 BTUH.

Total Airflow 37,000 CFM.

Outside air 5,200 CFM.

Two Semi-hermetic Discus Copeland Compressors.

6 stages of capacity control and Hot Gas bypass capacity control.

Air cooled condensing section.

Airfoil SWSI Plenum Supply and return blowers with seismic spring isolators.

Premium Efficiency Motors.

Full Economizer section.

Smoke detectors in supply and return air sections.

Service light with a switch and 15 amp GFI.

Discharge air temperature control system.



4500 Industrial Access Road Douglasville, GA 770-489-0716 P ; 770-489-2938 F ; www.seasons4.net